

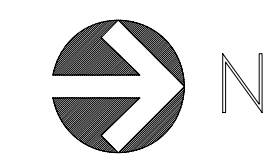
NOTES :-
 REFERENCE LEVEL IS TOP OF FINISH GROUND LEVEL
 SLAB AT EL. 966'-11~4

REFERENCE DWG: S2.1,S7

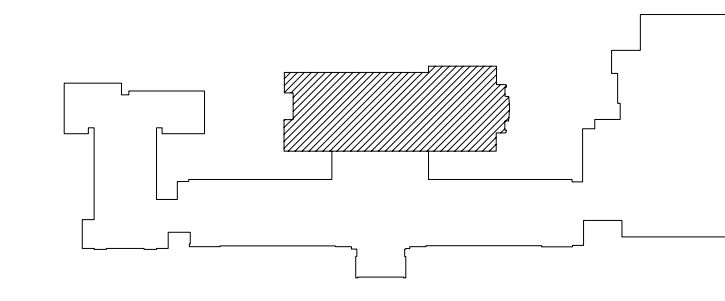
NOTED BY APPROVER
 TYPICAL DETAIL FOR PIERS @ INTERIOR & EXTERIOR COLUMNS
 IS TO BE AT ELEVATION [-2'-0"] UNLESS NOTED OTHERWISE. ALTHOUGH
 TOP OF PIER LOCATED @ [-0'-8"] IS ACCEPTABLE. CONTRACTOR TO COORDINATE
 BASE PLATE ELEVATIONS WITH PIERS SIZES & PIER REINFORCEMENT.
 ALSO, CONTRACTOR TO COORDINATE TOP OF PIER ELEVATIONS WITH STEEL COULMNS.
 LENGTHS. THIS MODIFICATION SHOULD NOT MAKE ANY ADDITIONAL COST TO THE OWNER

ANCHOR BOLT PLAN
 (CAFETERIA)

ALL LEVELS SHOWN ARE BOTTOM OF BASE PLATE



REAL TECH/REGAL SAMPLE



KEY PLAN

		APPROVAL	SHOP	FIELD
REV.	DATE	DESCRIPTION	NO. DATE	NO. DATE
13/16 Ø HOLES U.N.O.				
PAINT NOTES				
PREPARATION	FOR _____			
1ST COAT	LOCATION _____			
2ND COAT	CONTRACTOR _____			
3RD COAT	ARCHITECT _____			
TITLE	DRAWN BY _____	BILLED BY _____		
ANCHOR BOLT PLAN	CHECKED BY _____	SCALE _____		
JOB NO. 24052	CUSTOMER ORDER NO. _____	SHEET NO. AB2		