

BILL OF MATERIAL

Quantity	Quantity		Piece	Weight	Weight	Mhr	Steel	Sequence	Sequence
Unit	Total	Description	Mark	Length	Unit	Total	Remarks	Grade	Numbers
1		W12X120	112C1	44'-10 5/8"		5392.1		A992	
48		MASONARY_ANC		0'-4 7/8"		0.9	ma3	A108	
1		PL1/2X6		0'-6"		5.1	p171	A36	
1		PL3/4X13 5/16		1'-2 1/8"		39.9	p172	A36	
1		PL1 1/2X22		1'-10"		205.9	p291	A36	
1		W12X120	112C2	44'-10 5/8"		5392.1		A992	
34		MASONARY_ANC		0'-4 7/8"		0.9	ma3	A108	
1		PL1/2X6		0'-6"		5.1	p171	A36	
1		PL3/4X13 5/16		1'-2 1/8"		39.9	p172	A36	
1		PL1 1/2X22		1'-10"		205.9	p291	A36	

REAL TECH/REGAL SAMPLE

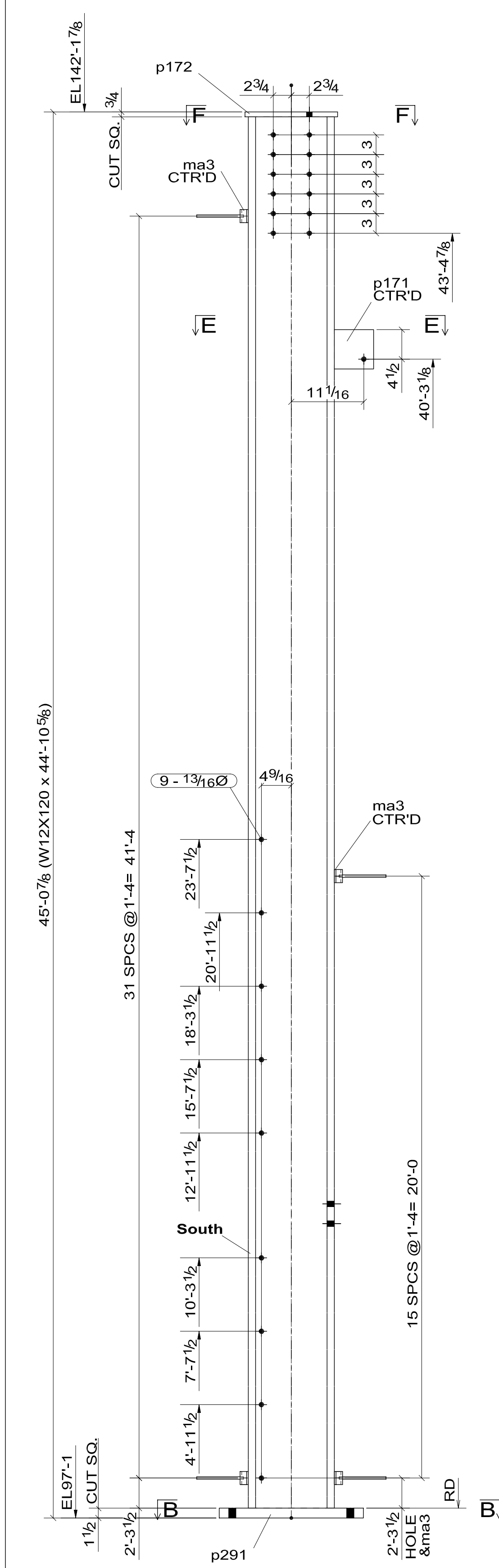
GENERAL NOTES:
STRUCTURAL STEEL SHALL BE:

ASTM A992, GRADE 50	WIDE FLANGE USED FOR COLUMNS, TRUSSED AND MOMENT FRAMES, UNLESS OTHERWISE NOTED.
ASTM A992, GRADE 50	WIDE FLANGES AND OTHER SHAPES USED AS PART OF THE LATERAL FORCE RESISTING SYSTEM UNLESS NOTED.
ASTM A36	CHANNELS, PLATES AND ANGLES EXCEPT AS NOTED.
ASTM A500, GRADE B (F _y =46 ksi)	HOLLOW STRUCTURAL SECTIONS, (RECTANGULAR AND ROUND TUBING)
ASTM A53, GRADE B (F _y =48 ksi)	SCHD. XX, PIPING

- PROCEDURES OF STEEL CONSTRUCTION SHALL BE IN ACCORDANCE WITH AISC SPECIFICATION, "FABRICATION, AND ERECTION OF STRUCTURAL FOR BUILDING.
- FOR MEMBERS AND CONNECTIONS THAT ARE PART OF THE LATERAL FORCE RESISTING, SYS DISCONTINUITIES BY FABRICATION ERRORS OR ERECTION OPERATIONS, SUCH AS TACK WELDS, AIR-ARC GOUGING, AND FLAME CUTTING, SHALL BE REPAIRED PER AISC SPECS.
- BOLTS SHALL CONFORM TO THE ASTM SPECIFICATION FOR A325 OR A490 HIGH STRENGTH BOLTS.
- ALL WELDING SHALL BE DONE BY AWS CERTIFIED WELDERS WITH CURRENT CERTIFICATIONS.

NO.	DATE	DESCRIPTION	APPROVAL	SHOP	FIELD
0					
1					
2					
3					
4					
5					

HOLES UNLESS NOTED 13/16 Ø		JOB NAME	
BOLTS UNLESS NOTED 3/4" Ø A325		LOCATION	
WELDS UNLESS NOTED 1/4" FILLET NSFS-(E70XX)		CUSTOMER	
NO PAINT		ARCH. OR ENG.	
PREPARATION	MADE BY	DATE	CHK. BY
FIRST COAT	DATE		DATE
SECOND COAT			
THIRD COAT			
OTHER NOTES:	CONTRACT NO. 0629		SHEET NO. 112

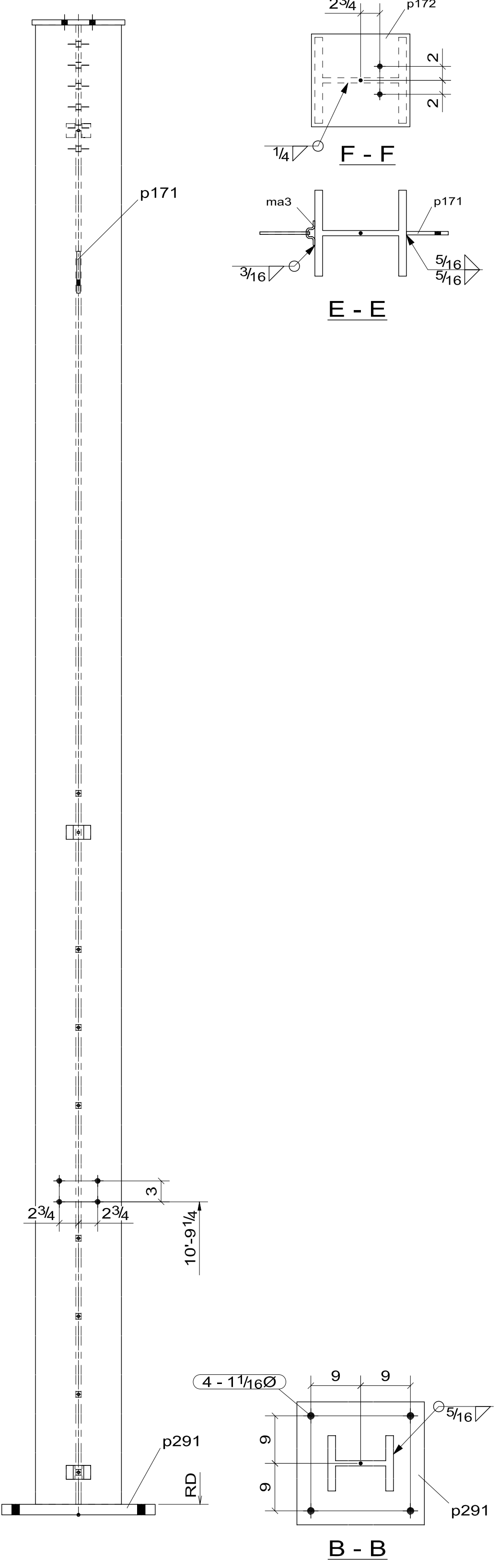


ONE - COLUMN - 112C1

TOTAL QTY	UNIT	FIELD BOLTS	LENGTH
2	2	3/4" DIA A325N BOLT	2 1/4"

GRID LOCATION
112C1 3.J/3.12

SEQ.	QUANTITY
3	1



ONE - COLUMN - 112C2

TOTAL QTY	UNIT	FIELD BOLTS	LENGTH
2	2	3/4" DIA A325N BOLT	2 1/4"

GRID LOCATION
112C2 3.K/3.12

SEQ.	QUANTITY
3	1