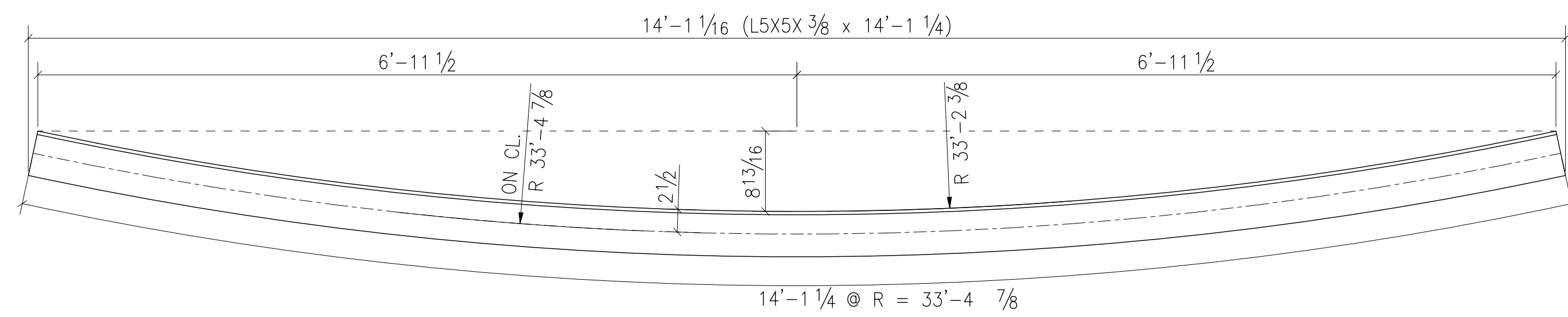
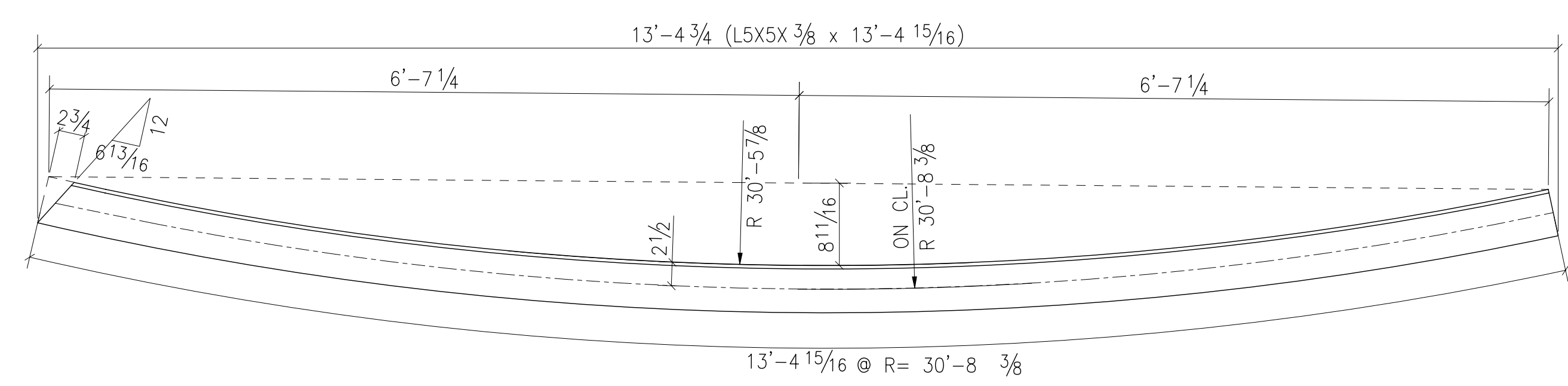


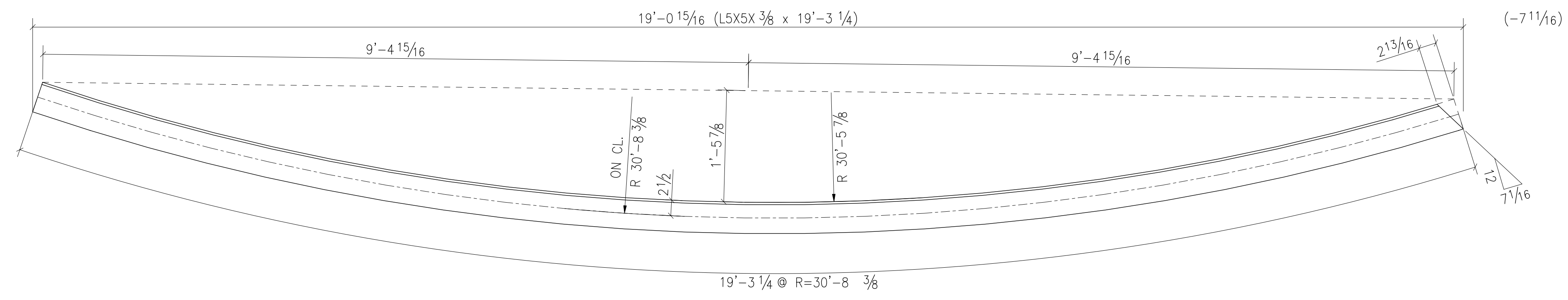
2 - ANGLES - 142M1 (GALV.)



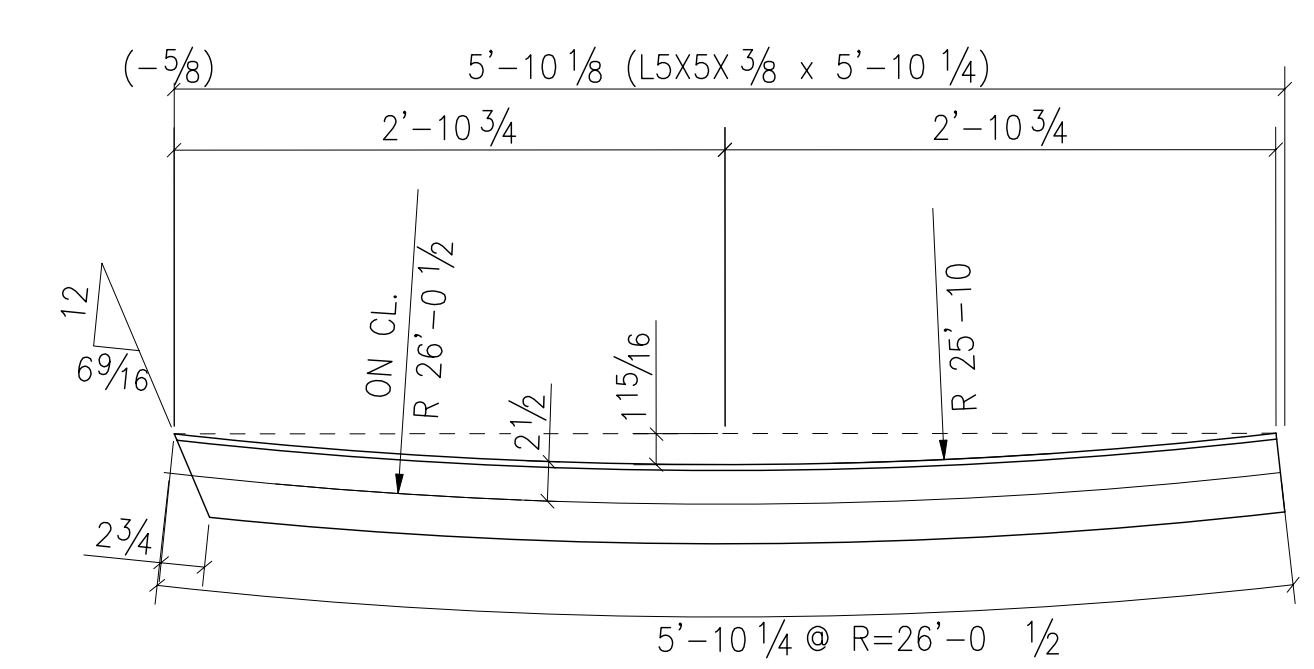
2 - ANGLES - 142M2 (GALV.)



ONE - ANGLE - 142M3 (GALV.)



2 - ANGLES - 142M4 (GALV.)



ONE - ANGLE - 142M5 (GALV.)

REAL TECH/REGAL SAMPLE

BILL OF MATERIALS

| ITEM | MARK | QTY | DESCRIPTION | LENGTH | | REMARKS | WT. |
|------|-------|-----|-----------------|--------|--------|-----------|--------|
| | | | | FEET | INCHES | | |
| 1 | 142M1 | 2 | L5X5X3/8 CURVED | 19'-9 | 1/16" | A36 GALV. | 242.69 |
| 2 | | | | | | | |
| 3 | 142M2 | 2 | L5X5X3/8 CURVED | 14'-1 | 1/4" | A36 GALV. | 173.28 |
| 4 | | | | | | | |
| 5 | 142M3 | 1 | L5X5X3/8 CURVED | 13'-4 | 15/16" | A36 GALV. | 164.75 |
| 6 | | | | | | | |
| 7 | 142M4 | 2 | L5X5X3/8 CURVED | 19'-3 | 1/4" | A36 GALV. | 236.72 |
| 8 | | | | | | | |
| 9 | 142M5 | 1 | L5X5X3/8 CURVED | 5'-10 | 1/4" | A36 GALV. | 71.91 |
| 10 | | | | | | | |
| 11 | | | | | | | |
| 12 | | | | | | | |
| 13 | | | | | | | |
| 14 | | | | | | | |
| 15 | | | | | | | |
| 16 | | | | | | | |
| 17 | | | | | | | |
| 18 | | | | | | | |
| 19 | | | | | | | |
| 20 | | | | | | | |
| 21 | | | | | | | |
| 22 | | | | | | | |
| 23 | | | | | | | |
| 24 | | | | | | | |
| 25 | | | | | | | |
| 26 | | | | | | | |
| 27 | | | | | | | |
| 28 | | | | | | | |
| 29 | | | | | | | |
| 30 | | | | | | | |
| 31 | | | | | | | |
| 32 | | | | | | | |
| 33 | | | | | | | |
| 34 | | | | | | | |
| 35 | | | | | | | |
| 36 | | | | | | | |
| 37 | | | | | | | |
| 38 | | | | | | | |
| 39 | | | | | | | |
| 40 | | | | | | | |
| 41 | | | | | | | |
| 42 | | | | | | | |

GENERAL NOTES

- ALL MATERIAL SHALL BE ASTM A36 U.N.O. WIDE FLANGE SHALL BE A992 U.N.O. TUBE STEEL SHALL BE A500-B AND PIPE SHALL BE A53-B U.N.O.
- DUPLICATION OF PIECE WORK ALSO INDICATES DUPLICATION OF WELDS.
- HOLE EDGE DISTANCE SHALL BE 1 1/4" U.N.O.
- ALL MEMBERS ARE CENTERED ON EACH OTHER U.N.O.
- ALL TAIL DIMENSIONS ARE TO TOP OF BASE PLATES OR SQUARE END OF BEAM.
- PLACE ALL SHIPPING MARKS ON LEFT END AND TOP OF PIECE AS DETAILED.
- ALL STEEL CLEANING SHALL BE SSPC-SP2 (HAND TOOL) OR SSPC-SP3 (POWER TOOL) U.N.O.
- ERECT ALL STEEL WITH SHIPPING MARK IN POSITION SHOWN ON ERECTION PLAN.
- ALL WELDING ELECTRODES SHALL BE E70XX U.N.O.
- COPE ALL RE-ENTRANT CORNERS 1/2" MIN. NOTCH FREE.

ALL WELDS ARE _____ FILLET U.N.O. OPEN HOLES ARE _____ Ø U.N.O.

PAINT: 1-S/C GRAY OXIDE

| | | | |
|---|--|--|--|
| △ | | | |
| △ | | | |
| △ | | | |
| △ | | | |

| REV. | DESCRIPTION | BY | DATE |
|-----------------|-------------|-----------|------|
| FOR APPROVAL: | TO SHOP: | TO FIELD: | |
| R & R APPROVAL: | | AS BUILT: | |

| | | |
|--------------|--------------|-------------|
| JOB NAME: | DRAWN BY: | CHECKED BY: |
| LOCATION: | SCALE: | |
| ARCH/ENGR: | DATE: | |
| CONTRACTOR: | JOB NUMBER | SHEET |
| DESCRIPTION: | MISC. DETAIL | 142 |